

Balada (Leonardo Costa, 2012)
para Swami Jr., Alexandre Cueva e Muari Vieira

The image shows a handwritten musical score for guitar, consisting of ten staves. The notation includes a treble clef, a key signature of one flat (Bb), and a 12/8 time signature. The music features a melodic line with eighth and sixteenth notes, often with slurs and accents. Chord diagrams are indicated by numbers 1-4 on the strings, and various chord names are written above the staves. The chords include: Cm, Cm⁹/Bb, A ϕ (⁹), Cm, Cm⁹/Bb, G⁷(#11) / Bb, Cm, F⁷(#11) / Cm, F⁹(6) / Cm / Eb, Eb⁷(#11) / Cm, Cm add 9, Cm⁹/Bb, D⁷(#11) / Cm, G⁷(#11) / Cm, F⁷(#11) / Cm, Bb/D, A⁴/C#, Bb, Bb/D, A⁴/C#, A ϕ (⁹), G⁷(#11) / Cm, F⁷(#11) / Cm, and F⁷(6) / Cm. There are also circled numbers 1, 2, and 3, and a circled '9' at the bottom left. The score ends with a double bar line and a final chord.

E⁰(M)₁₃

A⁷(#7)_(b13) A²(#11)

A¹¹(6)
A¹¹

A⁰(b6)

A⁰(2M)

A¹¹(M)

G¹³(#7) G¹³(b7)

F⁷(7)

B⁷(b7)

G¹¹(#5)_(b9)

G¹³(#7)

G¹¹(#5)_(b9)

G¹³(#5)

A¹¹(M)

G¹³(#7)

C⁴(#5)_(M)

C⁷(b7)

A¹¹(M)

G¹³(#7)

G¹¹(#5)_(b9)

G¹³(#5)

G¹¹

B⁷

A⁷(#7)

E⁷(#5)

A¹¹(M)

A¹¹(M)

C¹¹(M)

F¹¹(#11)

F¹¹

F¹¹

F¹¹

F¹¹

F¹¹

F¹¹

C_{hw}^{m(7)}

F_{hw}^{#9(11)}



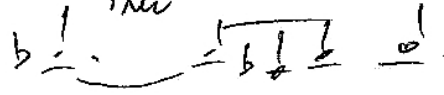
C_{hw}^{m(7)}

%



B_{hw}^{(add9)m}

F_{hw}⁹⁽¹¹⁾



A_{hw}⁹

A_{hw}^{0(m)}

A_{hw}^{m(7)}



D.C.